



US00D555907S

(12) **United States Design Patent** (10) **Patent No.:** **US D555,907 S**
Rennette (45) **Date of Patent:** **** Nov. 27, 2007**

(54) **HEXAGONAL BRUSH**
(76) Inventor: **Jean Rennette**, 3745 Shadowbrook Ct., Walnut Creek, CA (US) 94598
(**) Term: **14 Years**
(21) Appl. No.: **29/273,887**
(22) Filed: **Mar. 14, 2007**
(51) **LOC (8) Cl.** **04-02**
(52) **U.S. Cl.** **D4/133**
(58) **Field of Classification Search** D4/117, D4/128, 133, 138; D28/10, 25, 26, 31, 35, D28/37; 15/27; 132/223, 226-229, 237, 132/240, 262, 271, 313
See application file for complete search history.

(56) **References Cited**
U.S. PATENT DOCUMENTS
D120,345 S * 5/1940 Kahn D4/117
4,619,012 A * 10/1986 Wachtel 15/187
D366,761 S * 2/1996 Gertsma et al. D4/128
D510,192 S * 10/2005 Kampel et al. D4/128
FOREIGN PATENT DOCUMENTS
KR 30-0351974 S * 5/2004
KR 30-0454081 S * 6/2007

* cited by examiner

Primary Examiner—Robin V. Webster
Assistant Examiner—Lavone D. Tabor
(74) *Attorney, Agent, or Firm*—Stoneman Volk Patent Group; Martin L. Stoneman; Michael D. Volk, Jr.

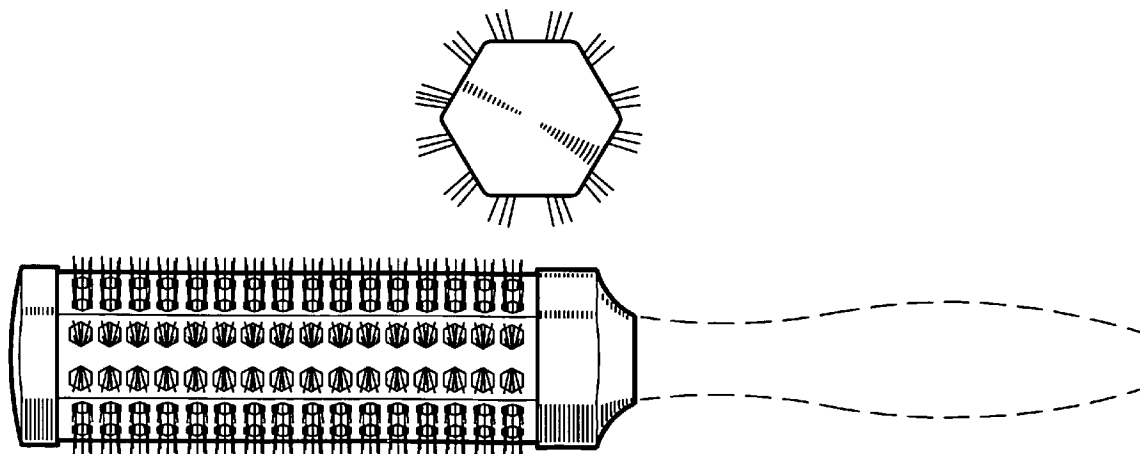
(57) **CLAIM**

The ornamental design for a hexagonal brush, as shown and described.

DESCRIPTION

FIG. 1 is a perspective view of a hexagonal brush, showing my new design;
FIG. 2 is a top plan view thereof (and also a mirror image of the bottom view);
FIG. 3 is a front elevational view thereof;
FIG. 4 is a rear elevational view thereof; and,
FIG. 5 is a side elevational view thereof (and also a mirror image of the opposite side).
The broken line showing of a handle is included for the purpose of illustrating environmental structure that forms no part of the claimed design.

1 Claim, 2 Drawing Sheets



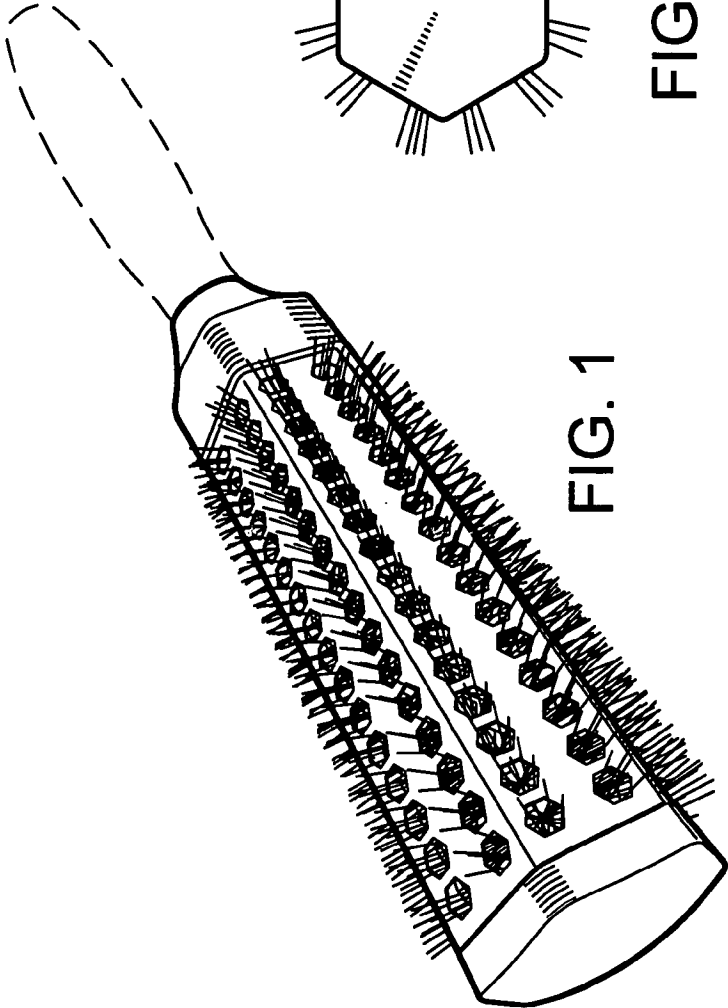


FIG. 1

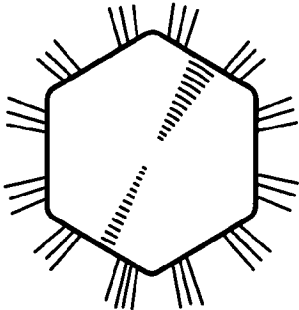


FIG. 3

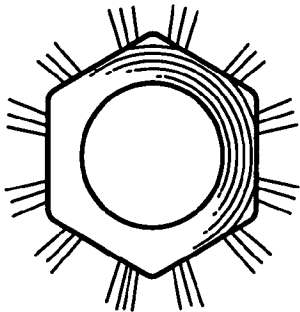


FIG. 4

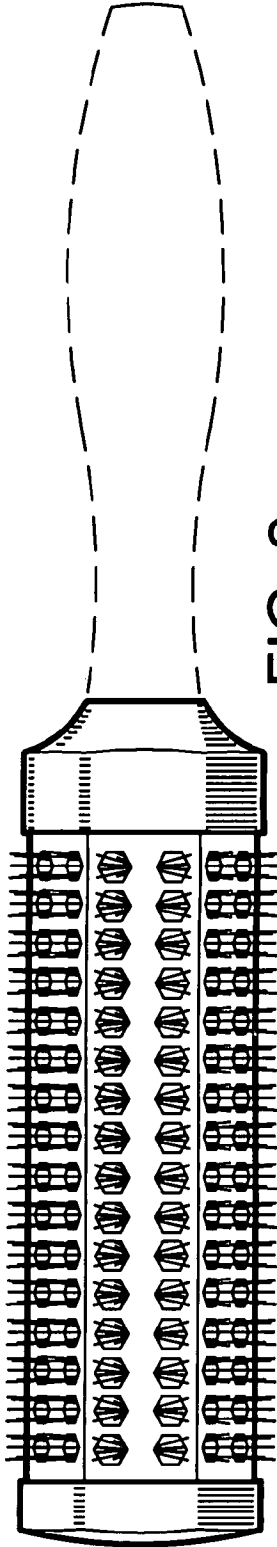


FIG. 2

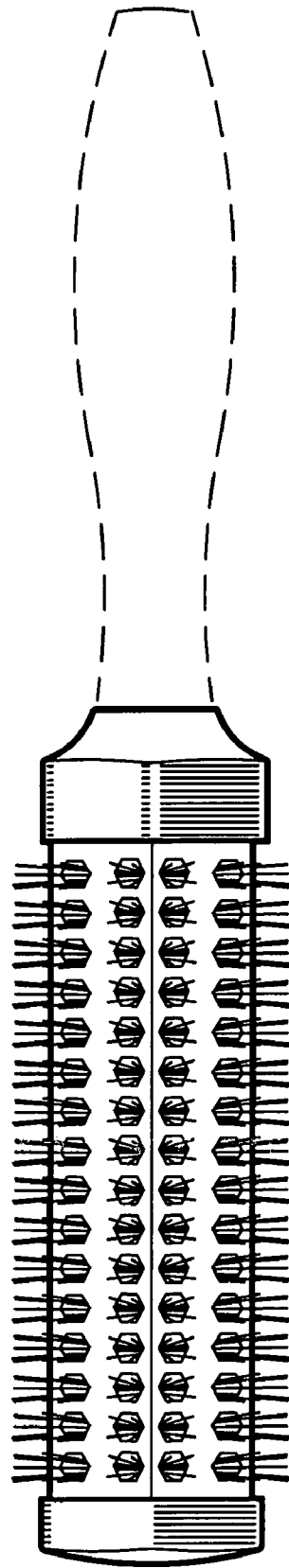


FIG. 5